

### Specifications

Model	Z-80/60	
Measurements	Metric	US
Working height maximum*	25.77 m	84 ft
Platform height maximum	23.77 m	78 ft
Horizontal reach maximum	18.29 m	60 ft
Up and over clearance maximum	8.83 m	29 ft
Below ground reach	4.83 m	15 ft 10 in
<b>A</b> Platform length - 8 ft / 6 ft	0.91 m/0.76 m	3 ft/2 ft 6 in
<b>B</b> Platform width - 8 ft / 6 ft	2.44 m/1.83 m	8 ft/6 ft
<b>C</b> Height - stowed	3.00 m	9 ft 10 in
<b>D</b> Length - stowed	11.27 m	37 ft
<b>E</b> Length - transport	11.27 m	37 ft
<b>F</b> Width	2.49 m	8 ft 2 in
<b>G</b> Wheelbase	2.85 m	9 ft 4 in
<b>H</b> Ground clearance - center	0.30 m	12 in

### Productivity

Lift capacity	227 kg	500 lbs
Platform rotation	160°	160°
Vertical jib rotation	135°	135°
Turntable rotation	360° continuous	
Turntable tailswing - riser up	1.17 m	3 ft 10 in
Turntable tailswing - riser down	2.24 m	7 ft 4 in
Drive speed - stowed	4.83 km/h	3.0 mph
Drive speed - raised**	1.1 km/h	0.68 mph
Lift speed to full height	76 sec	76 sec
Gradeability - 4WD - stowed***	45%	45%
Turning radius - 2WS inside	4.42 m	14 ft 6 in
Turning radius - 2WS outside	7.47 m	24 ft 6 in
Turning radius - 4WS inside	2.13 m	7 ft
Turning radius - 4WS outside	4.57 m	15 ft
Controls	12 V DC proportional	
Tyres	18-625 NHS	

### Power

Power source	Deutz TD2011 L04i turbo diesel 4-cylinder 74hp (55kW) Stage IIIA Deutz TCD2.2 L3 turbo diesel 3-cylinder 74hp (55 kW) Stage V	
Auxiliary power unit	12 V DC	12 V DC
Hydraulic tank capacity	170 L	45 gal
Fuel tank capacity	132 L	35 gal

### Sound & Vibration Levels

Sound pressure level (ground workstation)	85 dBA	85 dBA
Sound pressure level (platform workstation)	74 dBA	74 dBA
Vibration	<2.5 m/s <sup>2</sup>	<8 ft 2 in/s <sup>2</sup>

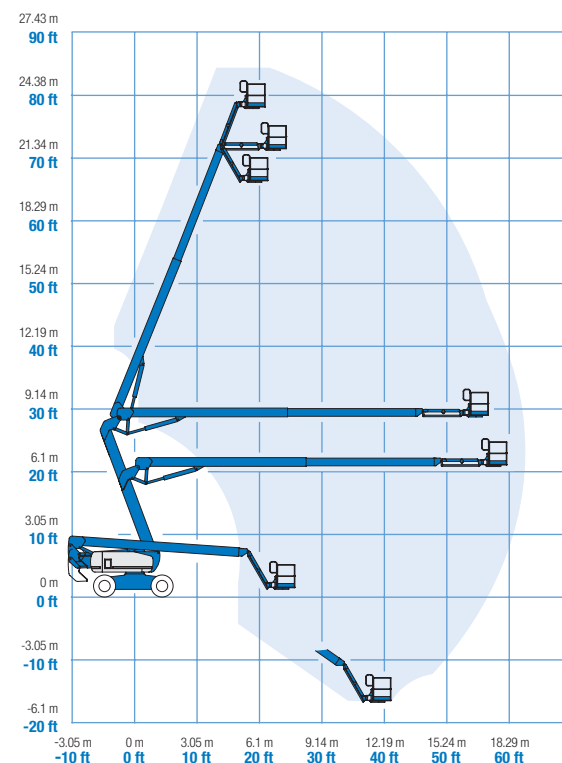
### Weight\*\*\*\*

CE 4WD/2WS	16,284 kg	35,900 lbs
CE 4WD/4WS	17,010 kg	37,500 lbs

### Standards Compliance

EU Directives: 2006/42/EC - Machinery (harmonized standard EN280:2013+A1:2015); 2004/108/EC (EMC); 2000/14/EC (Outdoor Noise)

### Range Of Motion Z-80/60

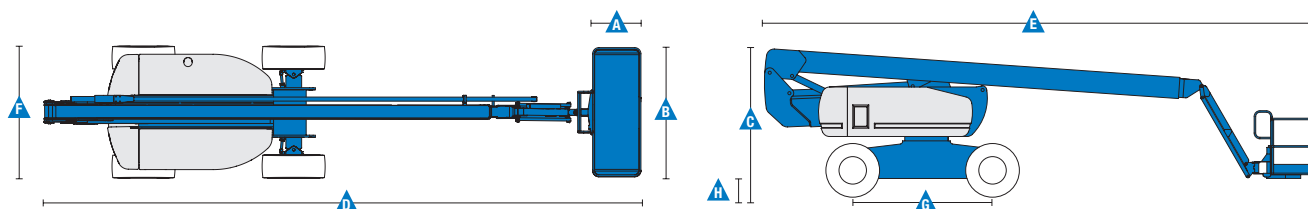


\* The metric equivalent of working height adds 2 m to platform height.  
U.S. adds 6 ft to platform height.

\*\* In lift mode (platform raised), the machine is designed to operate on firm, level surfaces only.

\*\*\* Gradeability applies to driving on slopes. See operator's manual for details regarding slope ratings.

\*\*\*\* Weight will vary depending on options and/or country standards.



## Features

### Standard Features

#### Measurements

- 25.77 m (84 ft) working height
- 18.29 m (60 ft) horizontal reach
- 8.83 m (29 ft) up and over clearance
- Up to 227 kg (500 lbs) lift capacity

#### Productivity

- Self-leveling platform
- Hydraulic platform rotation
- Proportional joystick controls
- Telematics-Ready Connector
- Thumb rocker steering
- On board diagnostics
- Hydraulic oil cooler
- Drive enable
- Chassis tilt drive function cut-out
- AC power cord to platform
- Horn
- Hour meter
- Tilt alarm
- Descent & travel alarms
- Flashing beacon
- 360° continuous turntable rotation
- Locking turntable covers
- Full-time positive traction drive
- Two speed wheel motors
- Four steering modes: front, rear, crab and coordinated
- Configurable controls to limit lift height to 70 ft
- Lift Guard™ Contact Alarm
- Lift Connect™ Telematics
- Lift Tool™ Work Tray

#### Power

- 12 V DC auxiliary power
- Anti-restart engine protection
- Auto engine fault shutdown
- Engine monitoring display
- Dual battery
- Engine status display
- Intake air heater (Deutz engine)

#### Axle

- Active oscillation

### Easily Configured To Meet Your Needs

#### Platform Options

- Steel 2.44 m (8 ft) tri-entry with side swing gate (standard)
- Steel 1.83 m (6 ft) dual entry with side swing gate

#### Jib

- Articulating 1.83 m (6 ft) jib boom with 135° range

#### Engine Options

- Deutz TD2011 L04i turbo diesel 4-cylinder 74hp (55kW) Stage IIIA
- Deutz TCD2.2 L3 turbo diesel 3-cylinder 74hp (55 kW) Stage V

#### Drive/Steer Options

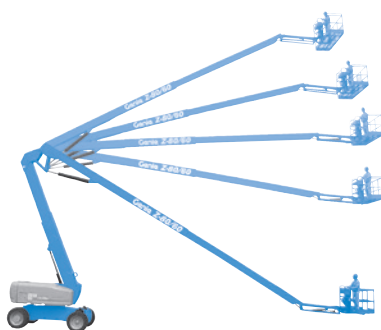
- 4 x 4 x 2 (standard)
- 4 x 4 x 4

#### Axle

- Active Oscillation (standard)

#### Tyre Options

- Rough terrain foam-filled (standard)
- Rough terrain non-marking foam-filled



### Options & Accessories

#### Productivity Options

- Lift Guard™ Half and Full mesh platform<sup>(1)</sup>
- Platform auxiliary top rail
- Air line to platform<sup>(1)</sup>
- Power to platform: plug, socket, with optional Residual-current Circuit Breaker with Overcurrent protection
- Work lights package (2 on chassis, 2 on platform)<sup>(1)</sup>
- Dual axis joystick steering<sup>(1)</sup>
- Biodegradable hydraulic oil
- Aircraft protection kit<sup>(1,4)</sup>: platform foam padding and platform disable system
- Hostile environment kit<sup>(1)</sup>: cylinder bellows, boom wiper seals, platform and ground control box covers
- Deluxe hostile environment kit<sup>(1)</sup>: adds to basic kit center turntable shield, ring gear guard, tail pipe guard, engine cover flaps and air pre-cleaner
- Track & Trace<sup>(2)</sup> (GPS unit providing machine location & operating information)
- Chassis tilt lift function cut-out (software setting)
- Lockable platform control box covers
- Operator Protective Structure<sup>(3)</sup>
- Tool Tray<sup>(3)</sup>
- Genie® Tech Pro™ Link Hand-held Diagnostics Device

#### Power Options

- AC generator packages (110V/60Hz - 220V/50Hz, 3000W)
- Diesel air intake pre-cleaner<sup>(1)</sup>
- Diesel catalytic scrubber muffler<sup>(1)</sup> (Stage IIIA engine only)
- Low temperature cut-out module
- EMEAR Cold Start kit: Inc. Engine heater & battery charger
- Cold weather packages<sup>(1)</sup>
- Positive air shutdown system

<sup>(1)</sup> Factory-fit option only

<sup>(2)</sup> Includes a first 2 years subscription

<sup>(3)</sup> Aftermarket only

<sup>(4)</sup> Reduces load capacity of about 27 kg (60 lb). Only available with 1.83 m (6 ft) platform, not available with any other platforms nor options on the platform