

Specifications

Models	Z-34/22 IC	
Measurements	Metric	US
Working height maximum*	12.54 m	40 ft 7 in
Platform height maximum	10.54 m	34 ft 7 in
Horizontal reach maximum	6.78 m	22 ft 3 in
Up and over clearance maximum	4.6 m	15 ft 1 in
A Platform length	0.76 m	2 ft 6 in
B Platform width	1.42 m	4 ft 8 in
C Height - stowed	2.06 m	6 ft 9 in
D Length - stowed	5.66 m	18 ft 7 in
E Storage height	2.29 m	7 ft 6 in
F Storage length	4.11 m	13 ft 6 in
G Width	1.85 m	6 ft 1 in
H Wheelbase	1.88 m	6 ft 2 in
I Ground clearance - center	0.17 m	6.5 in

Productivity

Lift capacity	227 kg	500 lbs
Platform rotation	180°	180°
Vertical jib rotation	139°	139°
Turntable rotation	355° non-continuous	
Turntable tailswing	zero	zero
Drive speed - stowed	4.8 km/h	3.0 mph
Drive speed - raised**	1.1 km/h	0.68 mph
Gradeability - stowed***	45%	45%
Turning radius - inside	1.80 m	5 ft 11 in
Turning radius - outside	4.11 m	13 ft 6 in
Controls	12V DC	proportional
Tyres - foam filled	25.4 x 42 cm rough terrain	10 x 16.5 in

Power

Power source Tier IV Kubota D-1105 3-cylinder diesel 19.4 kW (26 hp)

Auxiliary power unit	12V DC	12V DC
Hydraulic tank capacity	71.9 L	19 gal
Fuel tank capacity	35.2 L	9 gal

Sound & Vibration Levels

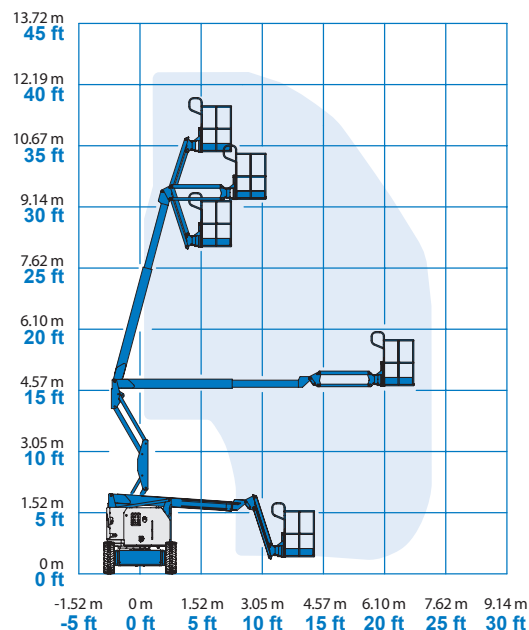
Sound pressure level (ground workstation)	<81 dBA	<81 dBA
Sound pressure level (platform workstation)	<80 dBA	<80 dBA
Vibration	<2.5 m/s ²	<8 ft 2 in/s ²

Weight****

CE Industrial foam filled tyres	N/A	N/A
CE rough terrain foam filled tyres	4,929 kg	10,986 lbs

Standards Compliance EU Directives: 2006/42/EC - Machinery (harmonized standard EN280); 2004/108/EC (EMC); 2000/14/EC (Outdoor Noise)

Range Of Motion Z-34/22 IC

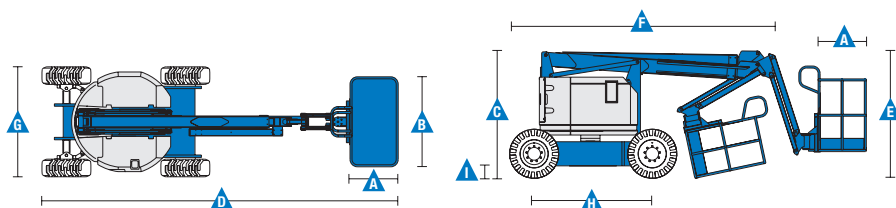


* The metric equivalent of working height adds 2 m to platform height. U.S. adds 6 ft to platform height.

** In lift mode (platform raised), the machine is designed to operate on firm, level surfaces only.

*** Gradeability applies to driving on slopes. See operator's manual for details regarding slope ratings.

**** Weight will vary depending on options and/or country standards.



Features

Standard Features	Easily Configured To Meet Your Needs	Options & Accessories
<p>Measurements</p> <p>Z-34/22 IC</p> <ul style="list-style-type: none"> • 12.54 m (40 ft 7 in) working height • 6.78 m (22 ft 3 in) horizontal reach • 4.6 m (15 ft 1 in) up and over clearance • Up to 227 kg (500 lbs) lift capacity <p>Productivity</p> <ul style="list-style-type: none"> • 1.22 m (4 ft) jib with 139° working range • Self-leveling platform • Hydraulic platform rotation • Proportional joystick controls • Telematics-Ready Connector • Thumb rocker steer • Drive enable • Chassis tilt drive function cut-out • AC power cord to platform • Horn • Hour meter • Tilt alarm • Descent & travel alarm • Flashing beacon • 355° non-continuous turntable rotation • Locking turntable covers • Zero tailswing and front arm swing • Two speed wheel motors • Dual parallelogram for vertical wall tracking • Lift Guard™ Contact Alarm <p>Power</p> <ul style="list-style-type: none"> • 12 V DC auxiliary power 	<p>Platform</p> <ul style="list-style-type: none"> • Steel 1.42 m (4 ft 8 in) (standard) <p>Jib</p> <ul style="list-style-type: none"> • Articulating 1.22 m (4 ft) jib boom <p>Engine</p> <ul style="list-style-type: none"> • Tier IV Kubota D-1105 3-cylinder diesel 19.4 kW (26 hp) <p>Drive</p> <ul style="list-style-type: none"> • 4WD <p>Tyre Options</p> <ul style="list-style-type: none"> • Industrial non-marking foam-filled • Rough terrain foam-filled (standard) 	<p>Productivity Options</p> <ul style="list-style-type: none"> • Platform auxiliary top rail • Air line to platform • Power to platform: plug, socket, with optional Residual-current Circuit Breaker with Overcurrent protection • Work lights package (2 on chassis, 2 on platform)⁽²⁾ • Aircraft protection kit^(1,2): platform foam padding and padded disable system • Hostile environment kit⁽²⁾: cylinder bellow, boom wiper seals and platform control box cover • Chassis tilt lift function cut-out kit • Biodegradable hydraulic oil⁽²⁾ • Track & Trace⁽³⁾ (GPS unit providing machine location & operating information) • Lockable platform control box cover • Tool tray⁽⁴⁾ <p>Power Options</p> <ul style="list-style-type: none"> • Diesel muffler with spark arrestor⁽²⁾ (Perkins only) • Engine gauge package⁽²⁾: oil pressure, temperature & voltage • AC Generator Packages (110 V / 60 Hz - 220 V / 50 Hz, 2200 W)⁽²⁾ • Low temperature cut-out module • EMEAR Cold Start kit: Inc. Engine heater & battery charger



⁽¹⁾ Reduces load capacity of about 27 kg (60 lb). Only available with standard platform, not available with any other platforms nor options on the platform
⁽²⁾ Factory - fit option only
⁽³⁾ Includes a first 2 years subscription
⁽⁴⁾ Aftermarket only