

# Compact Rough Terrain Telehandler

## GTH™-3007

### Specifications

Model	GTH™-3007	
Measurements	Metric	Imperial
Lifting height maximum	6.89 m	22 ft 7 in
Lifting capacity maximum	3,000 kg	6,614 lbs
Lift capacity at maximum height	2,500 kg	5,511 lbs
Lift capacity at maximum reach	1,000 kg	2,204 lbs
Forward reach maximum	3.99 m	13 ft 1 in
Reach at maximum height	76 cm	2 ft 6 in
Height	2.07 m	6 ft 9 in
Height at steering wheel	1.4 m	4 ft 7 in
Width	1.99 m	6 ft 6 in
Cab width	86 cm	2 ft 10 in
Track	1.59 m	5 ft 3 in
Wheelbase	2.66 m	8 ft 9 in
Length at front wheels	4.07 m	13 ft 4 in
Length at fork-holder plate	4.66 m	15 ft 3 in
Ground clearance	43 cm	1 ft 5 in
Overall length	5.86 m	19 ft 3 in
Obstruction angle	90°	
Departure angle	38°	

### Productivity

Inside/outside turning radius	2.55 m/4.4 m	8 ft 4 in/14 ft 5 in
Break-out force*	4,270 kg	9,413 lbs
Towing capacity at dynamometer*	3,100 kg	6,834 lbs
Drive speed max.	30 km/h	18.6 mph
Fork-holder plate rotation	128°	
Tyres (DIN 70361)	405/70-20" PR14 8 holes wheel disc	
Lifting/lowering speed**	9 sec./7 sec.	
Extension/retraction speed**	9 sec./5 sec.	

### Power

Engine****	Deutz TD 2.9 L4, 4-cylinder turbo diesel 55.4 kW (74 hp (55.4 kW), stage IIIA Deutz TD 2.9 L4, 4-cylinder turbo diesel 55.4 kW (74 hp), stage V	
Transmission	Hydrostatic variable displacement pump linked to variable displacement motor. Both piston type.	
Service pumps	Boom & Control system gear pump: 280 Bar, 78 L/min.	
Petrol tank capacities	90 L	20 gal
Engine oil capacities	8 L	2.1 gal
Hydraulic oil tank capacities	75 L	19.8 gal

Weight***	5.970 kg	13,161 lbs
-----------	----------	------------

### Standards Compliance

EU Machinery Directive 2006/42/EC and CEN Rough-Terrain Truck Standard EN 1459-1:2017

Operating cab conforms to ISO3471 (ROPS) and ISO3449 (FOPS)

Low emission engine conforms to EU Directive 97/68/EC Stage III, 2004/26/EC and European Emissions Regulation (EU) 2016/1628 Stage V

Noise emission conforms to EU Directive 2000/14/EC (LpA=83 dB, LwA=103dB)

Vibration levels according to EN13059:2002 (hand-arm <2.5m/s², whole body 0.44m/s²)

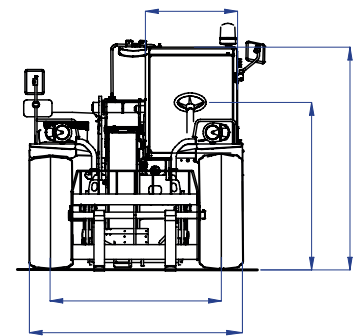
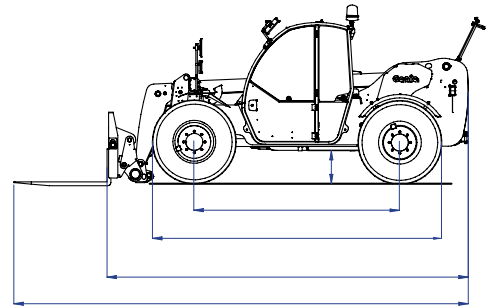
\* with 800 L shovel SAE J 732/80

\*\* Without load

\*\*\* Weight will vary depending on options and/or country standards

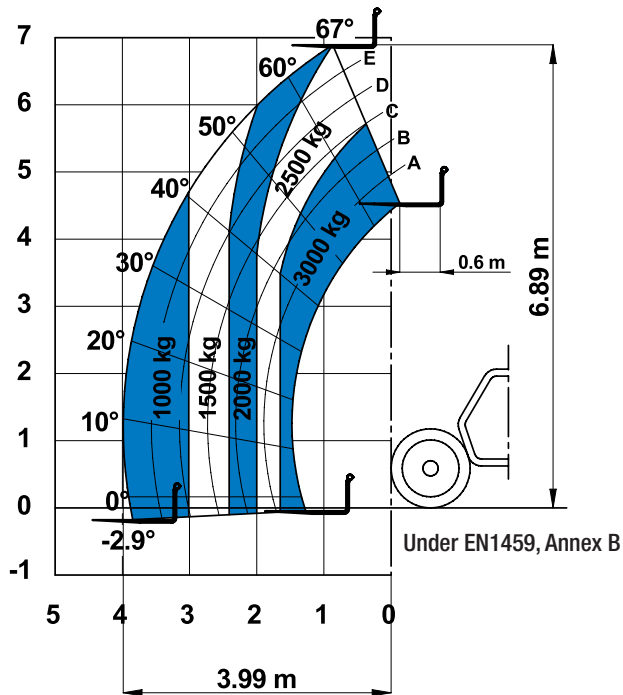
\*\*\*\* Stage IIIA is not CE certified

### Measurements

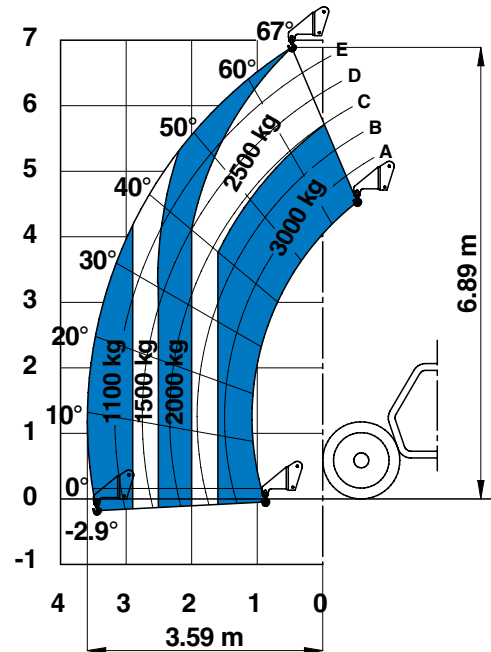


### Load Charts

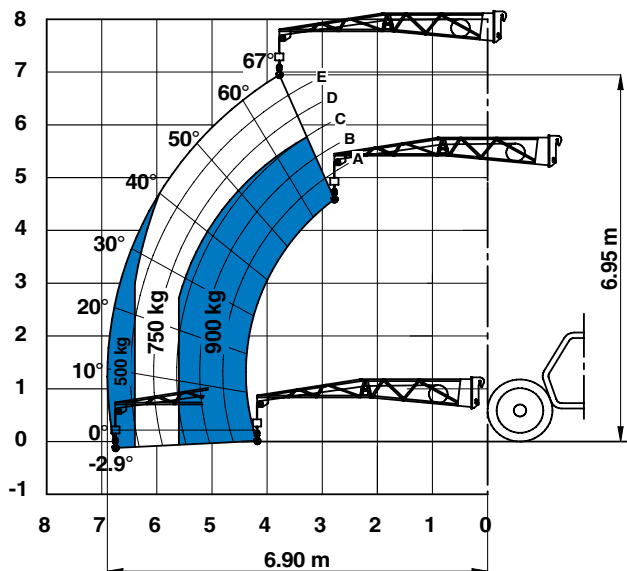
#### On wheels with forks



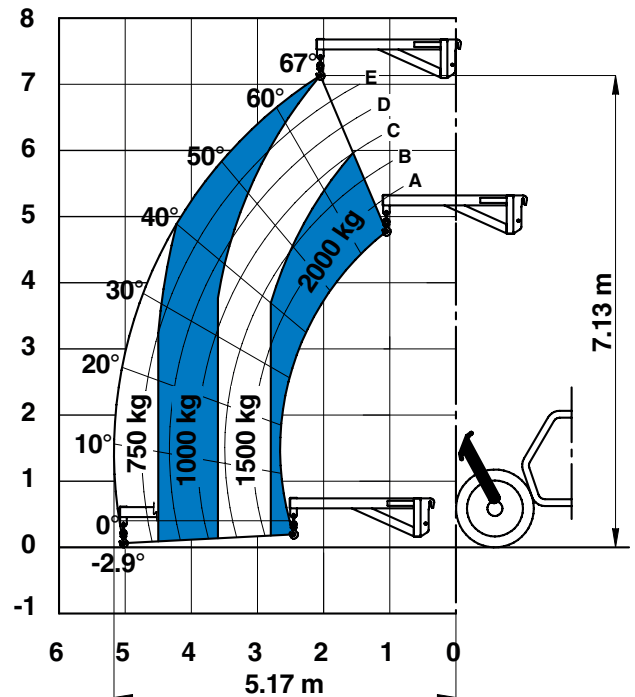
#### On wheels with hook



#### On wheels with 4m jib



#### On wheels with 2m jib



# Compact Rough Terrain Telehandler

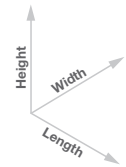
## GTH™ -3007

### Attachment Options

#### Fork attachments

Part Number	Description	Payload	Width	Length	Height	Weight
55.0750.0124	Floating forks	3,000 kg	1,285 mm	1,560 mm	950 mm	275 kg
55.0750.0114	FEM 3 plate and forks kit	3,000 kg	1,390 mm	1,505 mm	1,130 mm	380 kg
59.0601.5024	Hydraulic FEM 3 forks side-shift +/- 100 mm	2,250 kg	1,350 mm	1,560 mm	960 mm	355 kg

#### Dimension References



#### Bucket and shovel attachments

Part Number	Description	Width	Length	Height	Weight	Hyd. flow max.
59.0201.9019	500 L loading shovel	2,024 mm	980 mm	810 mm	355 kg	
59.0201.9020	800 L loading shovel	2,024 mm	1,175 mm	940 mm	420 kg	
59.0401.2028	500 L concrete bucket manual discharge	1,110 mm	1,110 mm	1,320 mm	230 kg	
59.0401.2029	500 L concrete bucket hydraulic discharge	1,110 mm	1,110 mm	1,320 mm	244 kg	65/250 lt/min/bar
59.0401.2018	250 L concrete mixing bucket full hydraulic	1,510 mm	795 mm	840/795 mm	400/950 kg	
59.0401.2032	Brick holder basket	800 mm	1,110 mm	1,150 mm	120 kg	

#### Handling and lifting attachments

Part Number	Description	Payload	Width	Length	Height*	Weight
59.0700.9013	Fixed hook on plate	3,000 kg	1,335 mm	830 mm	1,071/1,115 mm	160 kg
59.0802.3027	2m/2,000 kg mechanical jib	2,000 kg	1,335 mm	2,290 mm	800/1,080 mm	255 kg
59.0802.3028	4m/900 kg mechanical jib	900 kg	1,190 mm	4,450 mm	980/1,130 mm	245 kg

## Features

Standard Features	Standard Features	Options & Accessories
<b>Measurements</b> <ul style="list-style-type: none"> <li>• 3,000 kg (6,614 lb) maximum lift capacity</li> <li>• 6.89 m (22 ft 7 in) maximum lift height</li> <li>• 3.99 m (13 ft 1 in) maximum forward reach</li> </ul> <b>Productivity</b> <ul style="list-style-type: none"> <li>• 4 Wheel Drive</li> <li>• 4 Wheel Steer</li> <li>• 3 Steering Modes: Front, Crab, Coordinated</li> <li>• Power Assisted Steering</li> <li>• Hydrostatic Transmission</li> <li>• Limited Slip Differential on Front Axle</li> <li>• Oil immersed Multi-disc brakes on front axle</li> </ul> <b>Chassis &amp; Tyres</b> <ul style="list-style-type: none"> <li>• Side-mounted Engine for Easy Access and Maintenance</li> <li>• Towing Hook</li> <li>• Maintenance Collar</li> <li>• Front &amp; Rear Lights</li> <li>• Two side view and rear fish eye mirrors</li> <li>• Lockable fuel tank</li> </ul> <b>Cabin</b> <ul style="list-style-type: none"> <li>• Electro-proportional 4x1 Joystick</li> <li>• Two-section door (glass upper/steel lower)</li> <li>• Adjustable suspended seat</li> <li>• Adjustable steering wheel</li> <li>• Front &amp; rear windscreen wipers</li> <li>• Sunshield</li> <li>• Roof protection grid</li> <li>• Battery disconnection switch</li> <li>• Self activated parking brake hydraulically released</li> <li>• Road/jobsite switch</li> <li>• Longitudinal stability control system with display and audible alarm, lock out of boom extension</li> <li>• Use and Maintenance Handbook</li> </ul>	<b>Boom</b> <ul style="list-style-type: none"> <li>• Main hydraulic line on boom</li> <li>• Attachment holder plate with mechanical coupling</li> <li>• Angle and length indicators on boom</li> </ul> <b>Power</b> <ul style="list-style-type: none"> <li>• Deutz diesel 55.4 kW (74 hp), stage IIIA</li> <li>• Deutz diesel 55.4 kW (74 hp), stage V</li> </ul> <b>Tyres</b> <ul style="list-style-type: none"> <li>• Air filled rough terrain tyres, 405/70-20" PR14. 8 holes wheel disc (DIN 70361)</li> </ul>	<b>Productivity</b> <ul style="list-style-type: none"> <li>• Air conditioning</li> <li>• Hydraulic inching by service brake pedal action</li> <li>• Main electrical line on boom</li> <li>• Additional hydraulic line on boom</li> <li>• Hydraulic quick coupling for attachments</li> <li>• Adjustable LED spotlights - on boom <sup>(1)</sup> and cabin <sup>(2)</sup></li> <li>• Windshield protection grid</li> <li>• Wiper on cab roof</li> <li>• 6 t towing hook</li> <li>• Rear wheel alignment system</li> <li>• Biodegradable hydraulic oil</li> <li>• 10 t hydraulic jack + 24 mm box wrench</li> <li>• Winter fuel -22°C</li> <li>• Low temperature hydraulic oil</li> </ul> <b>Tyres and Wheels</b> <ul style="list-style-type: none"> <li>• Spare wheel 405/70-20" PR14</li> </ul> <b>Attachments</b> <ul style="list-style-type: none"> <li>• Floating forks L 1200 mm, section 100x50 mm</li> <li>• FEM 3 plate and forks kit</li> <li>• FEM 3 forks with hydraulic side-shift (+/-100 mm)</li> <li>• 500/800 L loading shovel</li> <li>• 500 L concrete bucket (manual or hydraulic discharge)</li> <li>• 250 L concrete mixing bucket (full hydraulic)</li> <li>• Brick-holder basket</li> <li>• Fixed hook on plate</li> <li>• 2 m mechanical extension jib, 2,000 kg capacity</li> <li>• 4 m mechanical extension jib, 900 kg capacity</li> </ul>



<sup>(1)</sup> Factory-fit option only  
<sup>(2)</sup> Aftermarket only